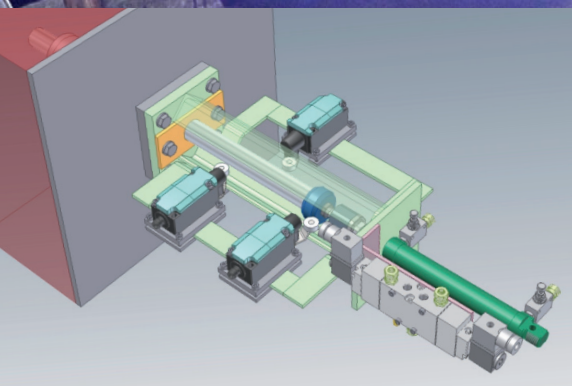


PERFORMANCE OPTIMIZATIONS AND IMPROVED PROCESS RELIABILITY FOR PUSHER TYPE AND RING HEARTH PLANTS



Performance optimization
+ process reliability by
improved contact rod guide

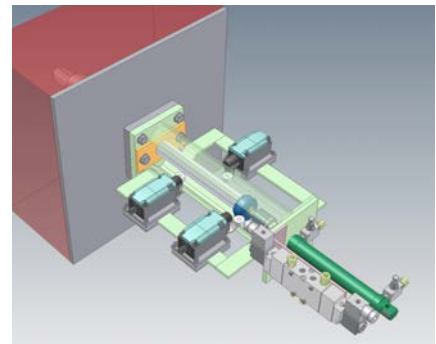
Improved contact rod guide

- In the past, always the same problem: The tightness of the contact rod guide.
- Now: A completely new concept for **fail-proof contact equipment resistant to interference.**

The AICHELIN solution: optimized end positions and lever limit switches

- Use of **more robust roller lever limit switches** instead of reed contacts.
- Use of **consistent end position switches** throughout the entire plant.
- **Optimized sealing** of the contact rod guide.

Robust limit switches guarantee reliable function.



Customer benefits

- No escape of hot, oily air.
- No overheating of end position switches.

Our unique selling points

- Use in all preheating and tempering furnaces, in pusher type furnaces, ringhearth furnaces and chamber furnaces.
- Perfect integration into your AICHELIN plant by the original manufacturer.



AICHELIN Service GmbH
Schultheiß-Köhle-Straße 7
D – 71636 Ludwigsburg
Tel.: +49 (71 41) 64 37-0
Fax: +49 (71 41) 64 37-100
E-Mail: service.de@aichelin.com



AICHELIN Ges.m.b.H.
Fabriksgasse 3
A – 2340 Mödling
Tel.: +43 (22 36) 2 36 46-0
Fax: +43 (22 36) 2 22 29
E-Mail: service.at@aichelin.com

www.aichelin-service.de

Member of AICHELIN Group